

1200SJP



SPECIFICATIONS

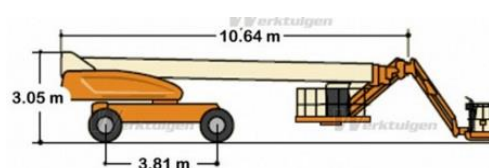
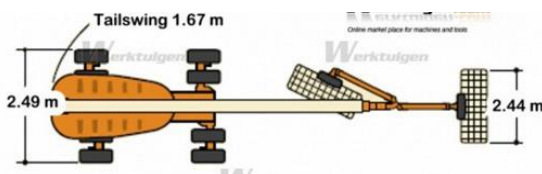
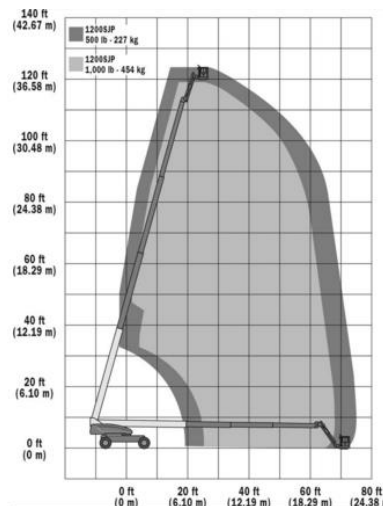
Telescopic Boom Lift

Key Specs

- Platform Height: 36.73 m / 120.5 ft
- Horizontal Outreach: 22.86 m / 75 ft
- Platform Capacity - Restricted: 450 kg / 992.1 lb
- Platform Capacity - Unrestricted: 230 kg / 507.1 lb

Key Features

- Ground to 120 ft up in 95 seconds
- Stability and capacity from 100,000-psi steel and a dual 1,000 / 500 lb capacity
- Equipped with a fuel-efficient Tier 4 engine





SPECIFICATIONS

1200SJP

Power Source	
Auxiliary Power	12 Volts DC
Capacity - Fuel Tank	117 L / 30.9 gal.
Engine Type - Diesel (LRC)	Deutz TD2011L4 55.9 kW 74.9 hp
Performance Data	
Axle Oscillation	0.3 m / 1 ft
Drive Speed - 4WD	5.20 km/h / 3.2 mph
Gradeability - 4WD	45 %
Platform Capacity - Restricted	450 kg / 992.1 lb
Platform Capacity - Unrestricted	230 kg / 507.1 lb
Swing	360 Degrees
Swing Type	Continuous
Turning Radius - Outside (axles extended)	5.89 m / 19.3 ft
Turning Radius - Outside (axles retracted)	6.86 m / 22.5 ft
Dimensional Data	
Height	10.64 m / 34.9 ft
Ground Clearance	0.3 m / 1 ft
Machine Height	3.05 m / 10 ft
Machine Length	13.67 m / 44.8 ft
Machine Width	2.49 m / 8.2 ft
Interior Width	3.81 m / 12.5 ft
Platform Dimension A	0.91 m / 3 ft
Platform Dimension B	2.44 m / 8 ft
Platform Height	36.73 m / 120.5 ft
Tailswing	1.68 m / 5.5 ft
Tire Size (ANSI Export and CSA)	445/50D710 Foam-Filled
Deck Width	130 Degrees
Reach Specifications	
Working Height	38.73 m / 127.1 ft
Working Outreach	23.51 m / 77.1 ft
Horizontal Jib Rotation	180 Degrees
Horizontal Outreach	22.86 m / 75 ft
Platform Height	36.73 m / 120.5 ft
General Specifications	
Capacity - Hydraulic Reservoir	250 L / 66 gal.
Ground Bearing Pressure	7.03 Kg/cm ²
Machine Weight (ANSI Export and CSA)	18552 kg / 40900.2 lb