

24RS



SPECIFICATIONS

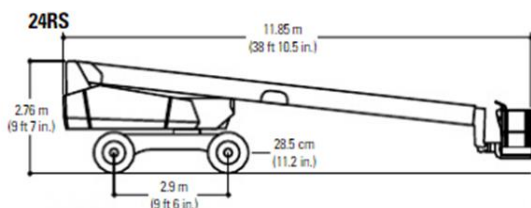
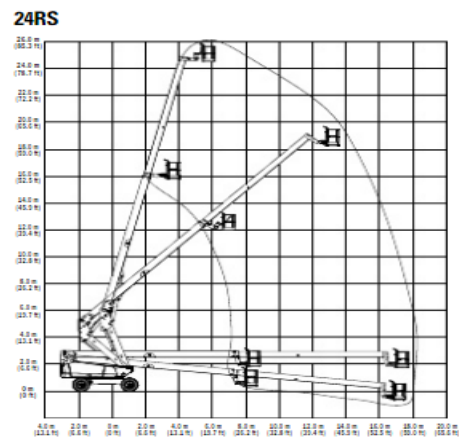
Telescopic Boom Lift

Key Specs

- Platform Height: 24.50 m / 80.4 ft
- Horizontal Outreach: 17.80 m / 58.4 ft
- Platform Capacity - Unrestricted: 227 kg / 500.4 lb

Key Features

- Simpler, Lighter, Lower Cost of Ownership
- Fewer cylinders, hoses, fittings, wires, and switches
- Lightest 24 meter self-propelled telescopic boom at 10,523 kg (23,200 lb)
- Transported in a 12.2 m (40 ft) container
- Identical layout to the control panel on other boom products to facilitate training and familiarity between models





SPECIFICATIONS

24RS

Power Source	
Auxiliary Power	12 Volts DC
Capacity - Fuel Tank	83.30 L / 22 gal.
Engine Type - Diesel	Deutz D2011 L040
Performance Data	
Axle Oscillation	0 m / 0 in.
Drive Speed - 4WD	4.50 km/h / 2.8 mph
Gradeability - 4WD	45 %
Platform Capacity - Unrestricted	227 kg / 500.4 lb
Swing	355 Degrees
Swing Type	Non-Continuous
Turning Radius - Outside	6.90 m / 22.6 ft
Dimensional Data	
Ground Clearance	0.28 m / 11 in.
Machine Height	2.76 m / 9.1 ft
Machine Length	11.85 m / 38.9 ft
Machine Width	2.49 m / 8.2 ft
Platform Dimension A	0.76 m / 2.5 ft
Platform Dimension B	2.27 m / 7.4 ft
Platform Height	24.50 m / 80.4 ft
Tailswing	1.90 m / 6.2 ft
Tire Size	39 x 15-22.5 Foam-Filled
Reach Specifications	
Horizontal Outreach	17.80 m / 58.4 ft
Platform Height	24.50 m / 80.4 ft
General Specifications	
Capacity - Hydraulic Reservoir	136.60 L / 36.1 gal.
Ground Bearing Pressure	5.83 Kg/cm ²
Machine Weight	10568 kg / 23298.5 lb