

450 AJ



SPECIFICATIONS

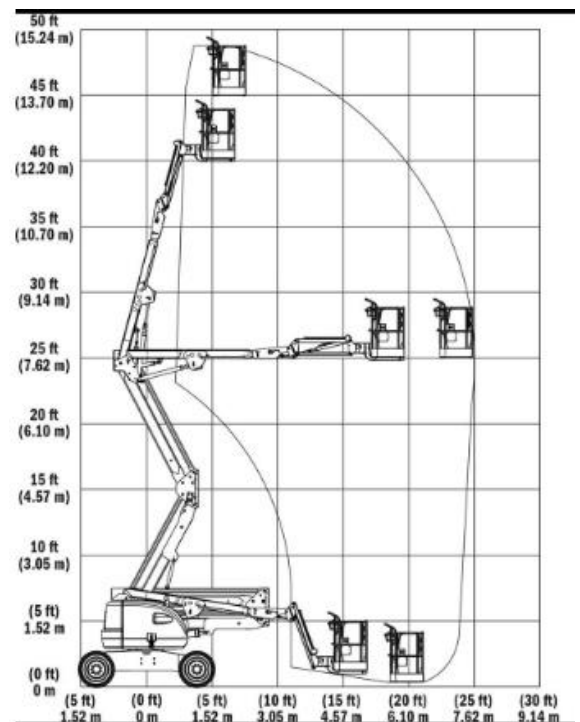
Articulating Boom Lift

Key Specs

- Platform Height: 13.72 m / 45 ft
- Horizontal Outreach: 7.62 m / 25 ft
- Platform Capacity - Unrestricted: 249.50 kg / 550.1 lb

Key Features

- Improved multifunction capability increases productivity
- More durability and serviceability thanks to the new DuraTough hood design
- Larger capacity at 550 lb





SPECIFICATIONS

450 AJ

Power Source	
Auxiliary Power	12 Volts DC
Capacity - Fuel Tank	60.50 L / 16 gal.
Engine Type - Diesel (HRC)	Deutz D2.9 L4 Tier 4 Final 49 hp 36.4 kW
Engine Type - Diesel (LRC)	Deutz D2.3L3 T4i 49 hp 36.4 kW
Engine Type - Dual Fuel	GM Vortec 3000 MPFI 82 hp 61 kW

Performance Data	
Axle Oscillation	0.1 m / 4 in.
Drive Speed - 4WD	6.80 km/h / 4.2 mph
Gradeability - 4WD	45 %
Platform Capacity - Unrestricted	249.50 kg / 550.1 lb
Swing	355 Degrees
Swing Type	Non-Continuous
Turning Radius - Outside	4.78 m / 15.7 ft

Dimensional Data	
Ground Clearance	0.42 m / 1 ft 5 in.
Machine Height	2.27 m / 7.4 ft
Machine Length	6.58 m / 21.6 ft
Height	6.58 m / 21.6 ft
Machine Width	2.34 m / 7.7 ft
Platform Dimension A	0.76 m / 2.5 ft
Platform Dimension B	1.83 m / 6 ft
Platform Height	13.72 m / 45 ft
Tailswing	Zero
Tire Size (ANSI Export and CSA)	33/1550 x 16.5 Superwide
Tyre Size AUS	33/1550 x 16.5 Superwide
Tyre size	33/1550 x 16.5 Superwide
Deck Width	144 Degrees

Reach Specifications	
Horizontal Jib Rotation	0 Degrees
Horizontal Outreach	7.62 m / 25 ft
Platform Height	13.72 m / 45 ft
Up and Over Height	7.30 m / 24 ft
Working Height	15.77 m / 51.7 ft
Working Outreach	8.27 m / 27.1 ft

General Specifications	
Capacity - Hydraulic Reservoir	144 L / 38 gal.
deleted - Ground-Bearing-Pressure	4 Kg/cm2
Machine Weight	6495 kg / 14319 lb
Machine Weight (CE and GOST)	6495 kg / 14319 lb