

460 SJ



SPECIFICATIONS

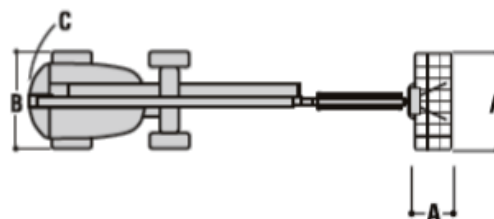
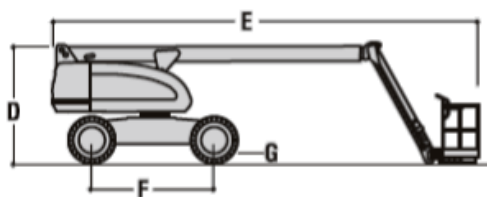
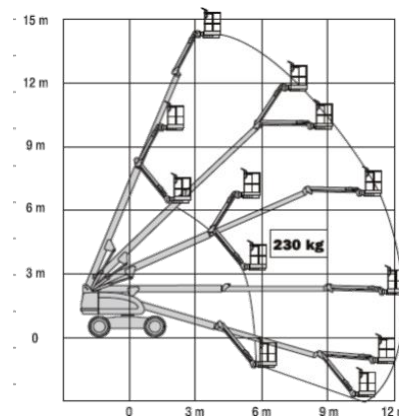
Telescopic Boom Lift

Key Specs

- Platform Height: 14.02 m / 46 ft
- Horizontal Outreach: 12.34 m / 40.5 ft
- Platform Capacity - Unrestricted: 270 kg / 595.2 lb

Key Features

- Best-in-class gradeability and reach
- Fastest lift and drive speeds for unmatched productivity
- Low cost of ownership
- Equipped with a fuel-efficient Tier 4 engine





SPECIFICATIONS

460 SJ

Power Source

Auxiliary Power	12 Volts DC
Capacity - Fuel Tank	98 L / 25.9 gal.
Engine Type - Diesel (LRC)	Deutz D2011L03 36.4 kW 49 hp
Engine Type - Dual Fuel	GM Vortec 3000 MPR 61 kW 82 hp

Performance Data

Axle Oscillation	0.2 m / 8 in.
Drive Speed - 2WD	7.20 km/h / 4.5 mph
Drive Speed - 4WD	7.20 km/h / 4.5 mph
Gradeability - 2WD	30 %
Gradeability - 4WD	45 %
Platform Capacity - Unrestricted	270 kg / 595.2 lb
Swing	360 Degrees
Swing Type	Continuous
Turning Radius - Outside	5 m / 16.4 ft

Dimensional Data

Ground Clearance	0.32 m / 1 ft 1 in.
Machine Height	2.39 m / 7.8 ft
Machine Length	8.84 m / 29 ft
Machine Width	2.31 m / 7.6 ft
Platform Dimension A	0.91 m / 3 ft
Platform Dimension B	2.44 m / 8 ft
Platform Height	14.02 m / 46 ft
Tailswing	0.86 m / 2 ft 10 in.
Tire Size (ANSI Export and CSA)	12 x 16.5 Pnuematic
Deck Width	130 Degrees

Reach Specifications

Working Height	16.09 m / 52.8 ft
Working Outreach	12.72 m / 41.7 ft
Horizontal Jib Rotation	0 Degrees
Horizontal Outreach	12.34 m / 40.5 ft
Platform Height	14.02 m / 46 ft

General Specifications

Capacity - Hydraulic Reservoir	159 L / 42 gal.
Ground Bearing Pressure	4.42 Kg/cm2
Machine Weight (ANSI Export and CSA)	7189 kg / 15849 lb