

# 600SC



## SPECIFICATIONS

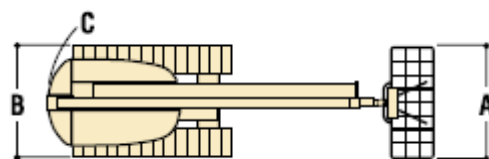
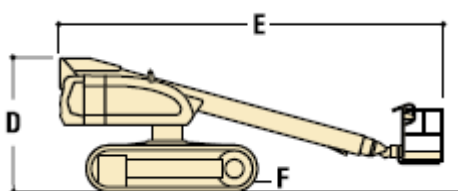
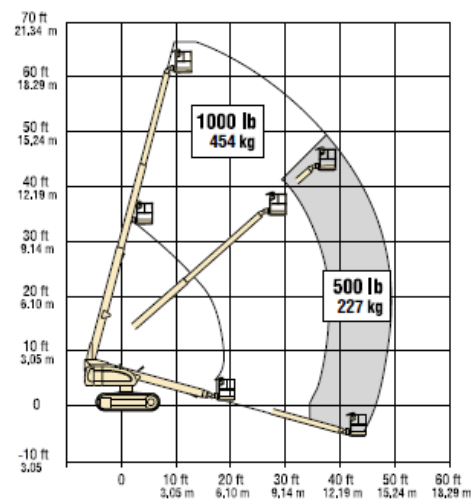
### Telescopic Crawler Boom Lift

#### Key Specs

- Horizontal Outreach: 49 ft 6 in. / 15.09 m
- Platform Capacity - Restricted: 1000 lb / 453.59 kg
- Platform Capacity - Unrestricted: 500 lb / 226.80 kg
- Platform Height: 60 ft 3 in. / 18.36 m

#### Key Features

- For your toughest jobs and terrains, the 600 Crawler Series
- provides the mobility you need
- Single drive / steer joystick for one-handed operation
- Zero turning radius to get around the jobsite easier





## SPECIFICATIONS

## 600SC

Power Source	
Auxiliary Power	12 Volts DC
Capacity - Fuel Tank	117 L / 30.9 gal.
Engine Type - Diesel	Deutz TD2.9L4
Performance Data	
Drive Speed - 4WD	2.57 km/h / 1.6 mph
Gradeability - 4WD	55 %
Platform Capacity - Restricted	455 kg / 1003.1 lb
Platform Capacity - Unrestricted	270 kg / 595.2 lb
Swing	360 Degrees
Swing Type	Continuous
Dimensional Data	
Ground Clearance	0.59 m / 1.9 ft
Machine Height	2.50 m / 8.2 ft
Machine Length	8.71 m / 28.6 ft
Machine Width	2.49 m / 8.2 ft
Platform Dimension A	0.91 m / 3 ft
Platform Dimension B	1.83 m / 6 ft
Platform Height	18.11 m / 59.4 ft
Tailswing	1.22 m / 4 ft
Track Width	0.50m
Reach Specifications	
Horizontal Outreach	15.32 m / 50.3 ft
Platform Height	18.11 m / 59.4 ft
Working Height	20.11 m / 66 ft
Working Outreach	15.97 m / 52.4 ft
General Specifications	
Capacity - Hydraulic Reservoir	129 L / 34.1 gal.
Machine Weight	11767 kg / 25941.8 lb
deleted - Maximum-Ground-Bearing-Pressure	0.66 Kg/cm2