

660SJ



SPECIFICATIONS

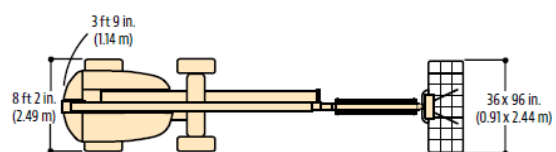
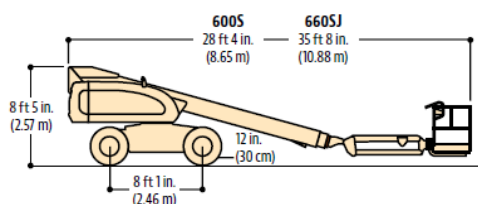
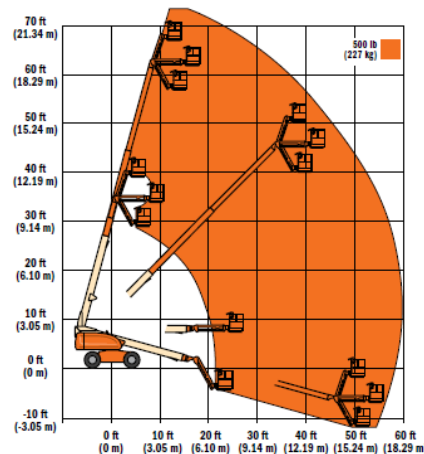
Telescopic Boom Lift

Key Specs

- Platform Height: 20.02 m / 65.7 ft
- Horizontal Outreach: 17.40 m / 57.1 ft
- Platform Capacity - Restricted: 340 kg / 749.6 lb
- Platform Capacity - Unrestricted: 250 kg / 551.2 lb

Key Features

- Best selling 60 ft boom lifts
- Select from 2 models
- Easy-to-use platform controls reduce operator training time
- Equipped with a fuel-efficient Tier 4 engine





SPECIFICATIONS

660SJ

Power Source

Auxiliary Power	12 Volts DC
Capacity - Fuel Tank	117 L / 30.9 gal.
Engine Type - Diesel	Deutz D2011L04 36.4kw
Engine Type - Dual Fuel	Ford M5G425-DF

Performance Data

Axle Oscillation	0.2 m / 8 in.
Platform Capacity - Restricted	340 kg / 749.6 lb
Drive Speed - 4WD	6.30 km/h / 3.9 mph
Gradeability - 4WD	45 %
Platform Capacity - Unrestricted	250 kg / 551.2 lb
Swing	360 Degrees
Swing Type	Continuous
Turning Radius - Outside (2WS)	5.96 m / 19.6 ft
Turning Radius - Outside (4WS)	3.87 m / 12.7 ft

Dimensional Data

Tire Size	355/55D625 Foam Filled
Ground Clearance	0.29 m / 1 ft
Machine Height	2.50 m / 8.2 ft
Machine Length	10.79 m / 35.4 ft
Machine Width	2.48 m / 8.1 ft
Platform Dimension A	0.91 m / 3 ft
Platform Dimension B	1.83 m / 6 ft
Platform Height	20.02 m / 65.7 ft
Tailswing	1.22 m / 4 ft
Deck Width	130 Degrees

Reach Specifications

Working Height	22.02 m / 72.2 ft
Horizontal Jib Rotation	0 Degrees
Horizontal Outreach	17.40 m / 57.1 ft
Platform Height	20.02 m / 65.7 ft

General Specifications

Capacity - Hydraulic Reservoir	129 L / 34.1 gal.
Machine Weight	11603 kg / 25580.2 lb
Ground Bearing Pressure	6.07 Kg/cm ²