

# 660SJC



## SPECIFICATIONS

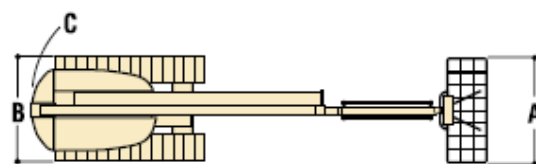
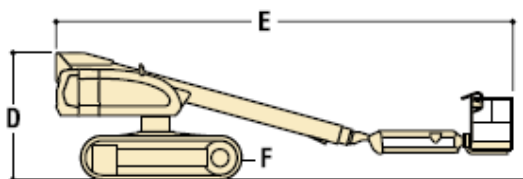
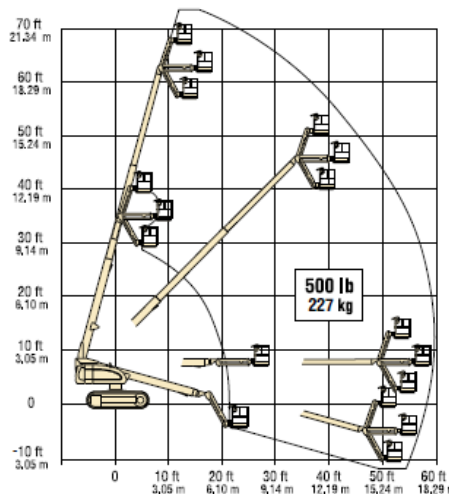
### Telescopic Crawler Boom Lift

#### Key Specs

- Platform Height: 19.99 m / 65.6 ft
- Horizontal Outreach: 17.39 m / 57.1 ft
- Platform Capacity - Restricted: 340 kg / 749.6 lb
- Platform Capacity - Unrestricted: 250 kg / 551.2 lb

#### Key Features

- For your toughest jobs and terrains, the 600 Crawler Series provides the mobility you need
- Single drive / steer joystick for one-handed operation
- Zero turning radius to get around the jobsite easier





## SPECIFICATIONS

## 660SJC

### Power Source

Auxiliary Power	12 Volts DC
Capacity - Fuel Tank	117 L / 30.9 gal.
Engine Type - Diesel	Deutz TD2.9L4

### Performance Data

Drive Speed - 4WD	2.57 km/h / 1.6 mph
Gradeability - 4WD	55 %
Platform Capacity - Restricted	340 kg / 749.6 lb
Platform Capacity - Unrestricted	250 kg / 551.2 lb
Swing	360 Degrees
Swing Type	Continuous

### Dimensional Data

Ground Clearance	0.42 m / 1.4 ft
Deck Width	130 Degrees
Machine Height	2.50 m / 8.2 ft
Machine Length	10.79 m / 35.4 ft
Machine Width	2.49 m / 8.2 ft
Platform Dimension A	0.91 m / 3 ft
Platform Dimension B	1.83 m / 6 ft
Platform Height	19.99 m / 65.6 ft
Tailswing	1.22 m / 4 ft
Track Width	0.50m

### Reach Specifications

Horizontal Outreach	17.39 m / 57.1 ft
Platform Height	19.99 m / 65.6 ft
Working Height	21.99 m / 72.1 ft
Working Outreach	18.04 m / 59.2 ft

### General Specifications

Capacity - Hydraulic Reservoir	129 L / 34.1 gal.
Machine Weight	13308 kg / 29339.1 lb
deleted - Maximum-Ground-Bearing-Pressure	0.79 Kg/cm2