

800S



SPECIFICATIONS

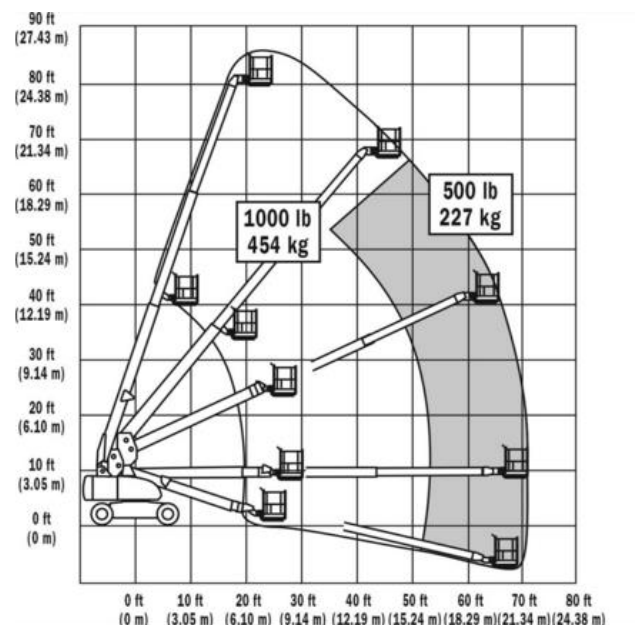
Telescopic Boom Lift

Key Specs

- Platform Height: 24.38 m / 80 ft
- Horizontal Outreach: 21.64 m / 71 ft
- Platform Capacity - Restricted: 453 kg / 998.7 lb
- Platform Capacity - Unrestricted: 226 kg / 498.2 lb

Key Features

- Reach full elevation in less than 70 seconds
- Advanced Design Electronics System reduces your costs by increasing fuel efficiency and reducing emissions
- Equipped with a fuel-efficient Tier 4 engine





SPECIFICATIONS

800S

Power Source

Auxiliary Power	12 Volts DC
Capacity - Fuel Tank	117 L / 30.9 gal.
Engine Type - Diesel (LRC)	Deutz D2011 L04 w/EGR 46 kW 61.6 hp
Engine Type - Dual Fuel	GM Vortec 3000 MPFI 61 kW 82 hp

Performance Data

Axle Oscillation	0.2 m / 8 in.
Drive Speed - 2WD	5.60 km/h / 3.5 mph
Drive Speed - 4WD	5.60 km/h / 3.5 mph
Gradeability - 2WD	30 %
Gradeability - 4WD	45 %
Platform Capacity - Restricted	453 kg / 998.7 lb
Platform Capacity - Unrestricted	226 kg / 498.2 lb
Swing	360 Degrees
Swing Type	Continuous
Turning Radius - Outside	6.86 m / 22.5 ft

Dimensional Data

Ground Clearance	0.3 m / 1 ft
Machine Height	3.02 m / 9.9 ft
Machine Length	11.35 m / 37.2 ft
Machine Width	2.49 m / 8.2 ft
Platform Dimension A	0.91 m / 3 ft
Platform Dimension B	2.44 m / 8 ft
Platform Height	24.38 m / 80 ft
Tailswing	1.42 m / 4.7 ft
Tire Size (ANSI Export and CSA)	15-625 Pnuematic

Reach Specifications

Working Height	26.38 m / 86.5 ft
Working Outreach	22.29 m / 73.1 ft
Horizontal Outreach	21.64 m / 71 ft
Platform Height	24.38 m / 80 ft

General Specifications

Capacity - Hydraulic Reservoir	235 L / 62.1 gal.
Ground Bearing Pressure	5.06 Kg/cm ²
Machine Weight (ANSI Export and CSA)	15060 kg / 33201.6 lb