

E300 AJP



SPECIFICATIONS

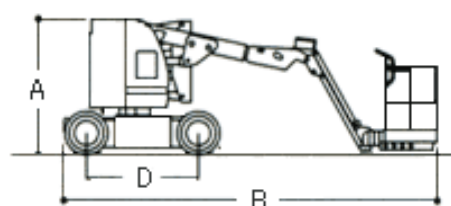
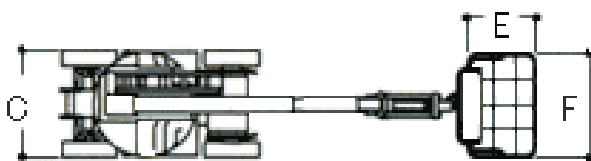
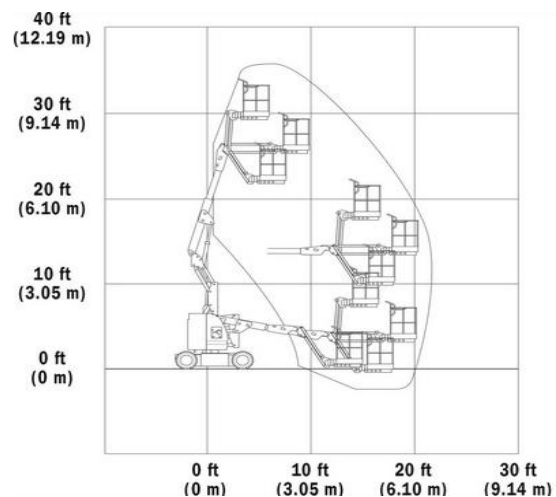
Articulating Boom Lift

Key Specs

- Machine Width: 1.22 m / 4 ft
- Platform Capacity - Unrestricted: 226.80 kg / 500 lb
- Platform Height: 8.97 m / 29 ft

Key Features

- Versatility – three options and three different chassis widths to fit any workspace
- Accessibility – up and over access, optional jib
- Maneuverability – move over uneven surfaces with the Automatic Traction Control option
- Productivity – longer with longer duty cycles
- Environmentally friendly – zero emissions





SPECIFICATIONS

E300 AJP

Power Source

Batteries	8 x 6V, 305 A-h
Electrical System	48 Volts DC

Performance Data

Drive Speed - Platform Lowered	4.80 km/h / 3 mph
Gradeability - 2WD	25 %
Platform Capacity	230 kg / 507 lb
Platform Capacity - Unrestricted	226.80 kg / 500 lb
Swing	350 Degrees
Swing Type	Non-Continuous
Turning Radius - Outside	3.10 m / 10 ft

Dimensional Data

Ground Clearance	0.1 m / 4 in.
Machine Height	2.01 m / 7 ft
Machine Length	5.74 m / 19 ft
Machine Width	1.22 m / 4 ft
Platform Dimension A	0.76 m / 2 ft
Platform Dimension B	1.22 m / 4 ft
Platform Height	8.97 m / 29 ft
Tailswing	Zero
Tyre Size	25 x 7 x 12 Non-marking
Wheelbase	1.65 m / 5 ft

Reach Specifications

Horizontal Jib Rotation	180 Degrees
Horizontal Outreach	6.12 m / 20 ft
Platform Height	8.97 m / 29 ft
Up and Over Height	4.01 m / 13 ft
Vertical Jib Rotation	144 Degrees

General Specifications

Capacity - Hydraulic Reservoir	10.98 L / 3 gal.
Machine Weight	6990 kg / 15410 lb