

E450 AJ



SPECIFICATIONS

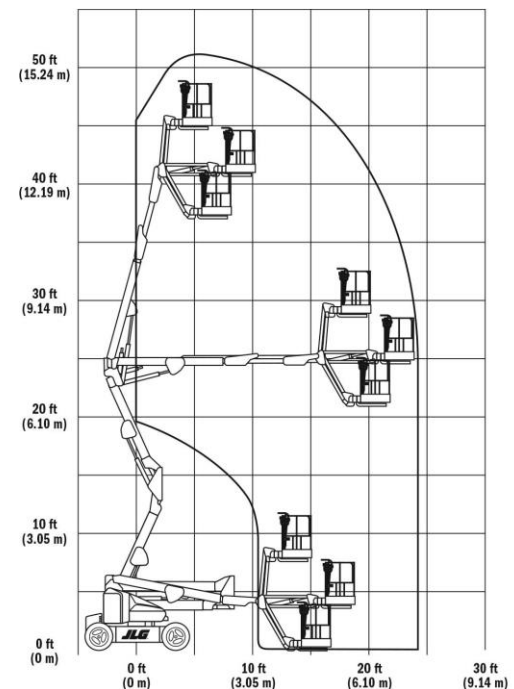
Articulating Boom Lift

Key Specs

- Platform Height: 13.72 m / 45 ft
- Machine Width: 1.75 m / 5.7 ft
- Platform Capacity - Unrestricted: 226.80 kg / 500 lb

Key Features

- Versatility – Three platform heights and jib and non-jib options; three chassis widths to fit any workspace; electric or multi-fuel
- Accessibility – up and over access, optional jib
- Maneuverability – move over uneven surfaces with the Automatic Traction Control option
- Productivity – work longer with longer duty cycles
- Environmentally friendly – zero emissions





SPECIFICATIONS

E450 AJ

Power Source	
Batteries	8 x 6V, 370 A-h
Electrical System	48 Volts DC
Performance Data	
Drive Speed - Platform Lowered	5.20 km/h / 3.2 mph
Gradeability - 2WD	30 %
Platform Capacity	230 kg / 507.1 lb
Platform Capacity - Unrestricted	226.80 kg / 500 lb
Swing	360 Degrees
Swing Type	Non-Continuous
Turning Radius - Outside	3.15 m / 10.3 ft
Dimensional Data	
Ground Clearance	0.2 m / 8 in.
Machine Height	2.01 m / 6.6 ft
Machine Length	6.45 m / 21.2 ft
Machine Width	1.75 m / 5.7 ft
Platform Dimension A	0.76 m / 2.5 ft
Platform Dimension B	1.52 m / 5 ft
Platform Height	13.72 m / 45 ft
Tailswing	0 m / 0 in.
Tire Size (ANSI Export and CSA)	240/55-17.5 Pneumatic
Deck Width	144 Degrees
Wheelbase	2.01 m / 6.6 ft
Reach Specifications	
Working Height	15.72 m / 51.6 ft
Working Outreach	7.89 m / 25.9 ft
Horizontal Jib Rotation	0 Degrees
Horizontal Outreach	7.24 m / 23.8 ft
Platform Height	13.72 m / 45 ft
Up and Over Height	7.70 m / 25.3 ft
General Specifications	
Capacity - Hydraulic Reservoir	20 L / 5.3 gal.
Machine Weight (ANSI Export and CSA)	6532 kg / 14400.6 lb