



B.B.RENTAL CO.,LTD.

Tel. (038) 451556
www.bbrental.co.th



**Rough Terrain -
Telescopic Boom
Material Handler**

GAL™ -737



○ A rugged, versatile and highly manoeuvrable machine ideal for the agricultural industry.

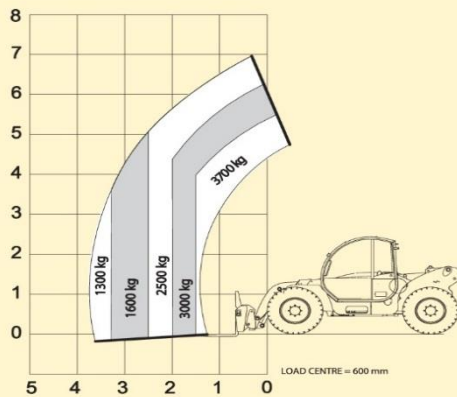


Genie Australia
GENIE MEANS MORE THAN LIFTING

B.B.RENTAL CO.,LTD. HEAD OFFICE

69 Moo 4 T.Mabpong, A.Panthong, Chonburi 20260
Tel. (038) 451556, (086) 3043156 - 7 Fax. (038) 451568
E-mail b.b.rental@hotmail.com

Lift Capacity Chart



Standard Features

- 3700 Kg (8157 lb) max lift capacity
- 6.95 m (22 ft 8 in) max lifting height
- 3.75 m (12 ft 3 in) max forward reach
- 360° visibility over the lowered boom
- Four wheel drive
- Three steering modes: Front wheel steer, crab steer and coordinated steer
- Oscillating rear axle
- Chassis levelling (+ or - 8°)
- Turbo – charged, direct injection engine with low emissions
- Limited slip differential on front axle
- 4 speed Automatic transmission with manual gear selection feature (4 front and 3 reverse gears)
- Brakes: multi disc, oil immersed, self adjusting
- Multi function – electroproportional joystick
- 3 point linkage (max – 3000Kg)
- Hydraulic PTO at rear (40Hp at 540rpm)
- 2 rear hydraulic connections (50L per min hydraulic flow)
- Power assisted steering
- Adjustable steering wheel
- Side mounted engine for easy access to components
- Floating forks
- Lockable fuel tank
- Fully adjustable seat
- Quick Coupling of attachments from cab

Options and Accessories

- Air Conditioning
- AM / FM radio with CD player
- Forks side shift Class 3 + / - 100mm (3000Kg max)
- Loading shovels 800 Litres
- Loose materials shovel 2000 Litres
- 4 in 1 bucket 900 Litres
- 2 bale and 4 bale hay forks
- Jib 4m / 900Kg
- Fixed hook (Max 3000 Kg)
- Jib 2m / 2000Kg
- Adjustable spotlights
- Spare wheel

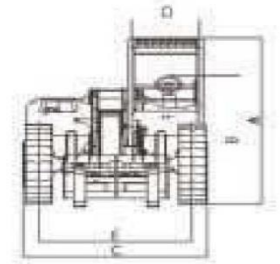
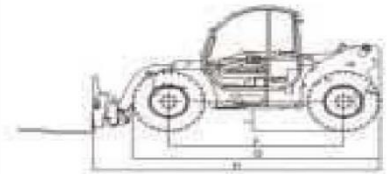
Safety System

- **Longitudinal stability control** system with: Visual display with coloured LED's, Audible alarm, automatic lockout of boom extension and lowering
- **Protection against** accidental manoeuvres

Standard Compliance

- Operating Cab, conforms to ISO 3471 (ROPS) and ISO 3449 (FOPS)
- Low emission diesel engine according to UE 97/68 directives

(A)	Height: 2445 mm (8 ft)
(B)	Height at steering wheel: 1860 mm (6 ft 1 in)
(C)	Width: 2235 mm (7 ft 3 in)
(D)	Inside cab width: 910 mm (2 ft 9 in)
(E)	Track: 1920 mm (6 ft 2 in)
(F)	Wheelbase: 2850 mm (9 ft 3 in)
(G)	Length at front wheels: 4034 mm (13 ft 2 in)
(H)	Length at fork-holder plate: 4695 mm (15 ft 4 in)
(I)	Ground clearance: 447 mm (1 ft 4 in)



Specifications

	Metric	Imperial
Lift capacity (Max)	3700Kg	8157 lb
Lift capacity at max height	2500Kg	5511 lb
Lift capacity at max reach	1300Kg	2866 lb
Lifting height (Max)	6.95m	22ft /8in
Maximum forward reach	3.75m	12ft/3in
Fork holding plate rotation	135°	135°
Inside / outside turning radius	1500mm/3500mm	4ft 9in/ 11ft 4in
Obstruction angle	90°	90°
Departure angle	90°	90°
Engine	Deutz direct injected diesel, water cooled, 4 cylinder, turbocharged 74KW (101Hp)	
Transmission	Dana powershift automatic gearbox with torque converter and manual gear selection feature, 4 forward gears and 3 reverse gears.	
3 point linkage - lift capacity (Max)	3000Kg	6614 lb
PTO power output (Max)	30KW at 540rpm	40Hp at 540 rpm
Flow rate from rear hydraulic outputs (Max)	50L per min	13 gal per min
Maximum travel speed	40Km/h	25mph
Gradeability (Unloaded)	40%	40%
(Full Load)	25%	25%
Break-out force (800L Bucket)	5450Kg	12015 lb
Towing capacity at dynameter	5200Kg	11464 lb
Tank capacities		
Fuel	150L	42 gal
Engine oil	22L	3.1 gal
Hydraulic oil	80L	21 gal
Forks: Floating forks	length 1200mm	3ft 9 in
Section	130mm x 50mm	4in x 1.5in
Tyres	405/75 – 24 8 hole wheel disc (DIN 70361)	
Weight	7900Kg	17416 lb

Genie Industries

GENIE AUSTRALIA
591 Boundary Road, Darra Qld 4076
PO Box 394, Richlands Qld 4077
Telephone **07 3375 1660**
Toll Free in Australia **1800 331 660**
Fax 07 3375 1002
http://www.genieindustries.com

GENIE UNITED STATES
18340 NE 76th Street
P.O. Box 97030
Redmond, Washington 98073-9730
Telephone **(425) 881-1800**
Toll Free In USA/Canada **800-536-1800**
Fax (425) 883-3475
http://www.genieindustries.com

For further information, please contact your local distributor or the Genie sales office listed. Continuous improvement of our products is a Genie/Terex policy. Product specifications are subject to change without notice or obligation. The photographs and drawings in this brochure are for illustrative purposes only, and should not be used for any other purposes, including operational, servicing or maintenance procedures. Refer to the appropriate Genie Operators Manual. Genie is a Registered Trademark of Genie Industries in the USA and many other countries. Genie is a Terex company. 06/04, Part No. B43022UK, GEN0400, September 2005