



ROUGH TERRAIN TELEHANDLER
GTH™-4017



Specifications

MODEL	GTH™-4017	
MEASUREMENTS	Metric	US
Lifting height maximum with outriggers	16.72 m	54 ft 9 in
Lifting height maximum without outriggers	16.59 m	54 ft 4 in
Lifting capacity maximum	4,000 kg	8,818 lbs
Lift capacity at maximum height	2,500 kg	5,512 lbs
Lift capacity at maximum reach	600 kg	1,323 lbs
Forward reach maximum	12.55 m	41 ft 2 in
Reach at maximum height	0.59 m	1 ft 11 in
A Height	2.61 m	8 ft 7 in
B Height at steering wheel	1.65 m	5 ft 5 in
C Width	2.45 m	8 ft
D Inside cab width	0.78 m	2 ft 7 in
E Track	1.98 m	6 ft 6 in
F Wheelbase	2.85 m	9 ft 4 in
G Length at front wheels	4.70 m	15 ft 5 in
H Length at fork-holder plate	6.49 m	21 ft 3 in
I Ground clearance	0.42 m	1 ft 5 in
J Overall width, outriggers extended	2.95 m	9 ft 8 in
M1 Obstruction angle	37°	37°
M2 Departure angle	32°	32°

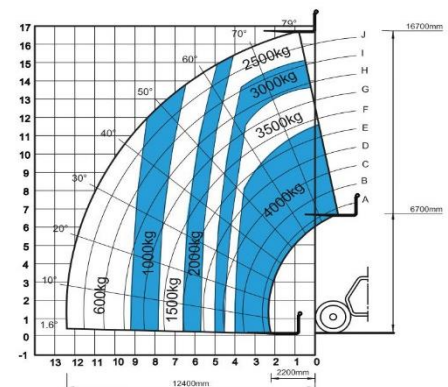
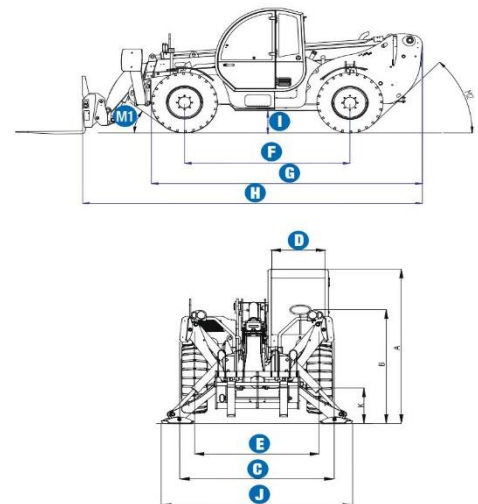
PRODUCTIVITY		
Inside/outside turning radius	2.15 m / 4.50 m	7 ft / 14 ft 9 in
Break out force (with 800L bucket SAE J 732)	7,900 kg	17,417 lbs
Drawbar pull	8,200 kg / 7,250 kg	18,076 lbs / 15,984 lbs
Drive speed	35 km/h	22 mph
Fork-holder plate rotation	145°	145°
Chassis levelling on the front axle	+/- 8°	+/- 8°
Floating forks	L 1200 mm Section 120 x 50 mm	L 3 ft 11 in Section 4.7 in x 2 in
Tyres (DIN 70361)	405/70-24" PR14 8-hole wheel rim	
Lifting/lowering speed**	14 / 10 sec	14 / 10 sec
Extension/retraction speed**	26 / 16 sec	26 / 16 sec

POWER		
Engine	Perkins 1104 D-44T turbo diesel 74.5 kW (100 hp), Tier 3	
Tank capacities		
Fuel	135 L	35.7 gal
Engine oil	7 L	1.8 gal
Hydraulic oil	150 L	39.6 gal

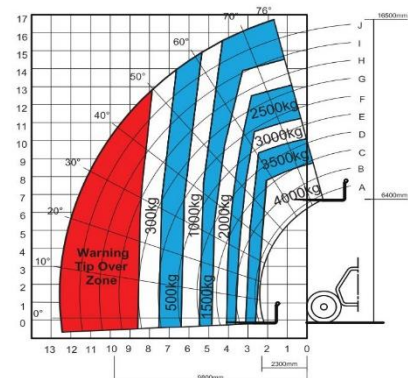
WEIGHT		
Weight***	11,850 kg	26,125 lbs

STANDARDS COMPLIANCE		
	AS 1418.19, EN 1459	
	EU Machinery Directive 98/37/CE	
	Operating cab conforms to ISO3471 (ROPS) and ISO3449 (FOPS)	
	Low emission engine conforms to EU Directive 97/68/EC stage III	

** Without load
*** Weight will vary depending on options and/or country standards
**** Load ratings vary depending on attachment



Lift capacity chart (with outriggers)****



Lift capacity chart (without outriggers)****



ROUGH TERRAIN TELEHANDLER

GTH™-4017



Features

STANDARD FEATURES

MEASUREMENTS

- 4,000 kg (8,818 lbs) maximum lift capacity
- 16.72 m (54 ft 9 in) maximum lift height
- 12.55 m (41 ft 2 in) maximum forward reach

PRODUCTIVITY

- 4WD
- Four wheel steer
- Three steering modes:
 - Front wheel steer
 - Crab steer
 - Coordinated steer
- Hydraulic line on boom
- Power assisted steering
- Front outriggers
- Hydrostatic transmission with variable displacement pump and motor electronically controlled
- Two-speed mechanical gearbox
- Multifunction electro-proportional 4 x 1 joystick
- Limited slip differential on front axle
- Chassis levelling on front axle +/- 8°
- Floating forks
- Quick coupling of attachments from cab
- Two-section door (glass upper/steel lower)
- Angle and length indicators on boom
- Adjustable suspended seat
- Large diameter steering wheel
- Front and rear windscreen wipers
- Sunshield
- Roof protection grid
- Two side rear view mirrors
- Front and rear lights
- Windshield protection grid
- Side mounted engine for easy access to components
- Oil immersed multi-disc brake on both axles
- Lockable fuel tank

STANDARD FEATURES cont.

- Load Management System (LMS) with:
 - Load moment indicator with LEDs
 - Audible alarm
 - Automatic lock-out of boom extension, lifting and lowering
 - Automatic lock-out of outriggers
- Automatic lock-out of rear axle
- Control enable switch
- Hydraulic inching
- Boom safety strut

POWER

- Perkins turbo diesel 74.5 kW (100 hp)

TYRES

- 405/70-24" tyres

OPTIONS & ACCESSORIES

PRODUCTIVITY

- Air conditioning
- Hydraulic winch pre-arrangement on boom
- Man-platform / Emergency hydraulic pump pre-arrangement
- Emergency pump kit
- Special air filter
- Adjustable spotlight on boom including cable reel and cable bracket
- Adjustable spotlight on cab
- Fish eye rear view mirror in the back
- Water muffler
- Rear wheels alignment sensor
- AM/FM radio with CD player

ATTACHMENT OPTIONS

Genie has a large range of attachments available. Please contact Genie or your nearest Genie telehandler dealer.

