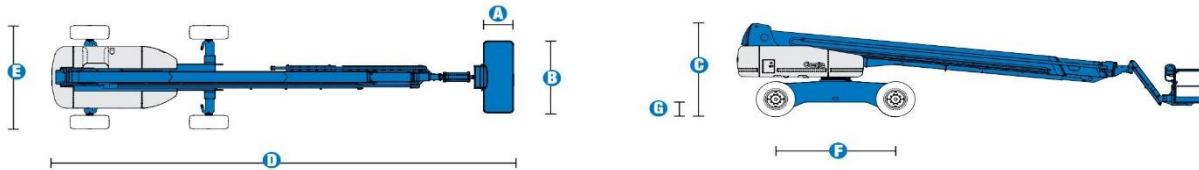


SELF-PROPELLED TELESCOPIC BOOMS
S™-125



Specifications



| MODEL | S™-125 | |
|---------------------------------------|---------|-------------|
| MEASUREMENTS | Metric | US |
| Working height maximum* | 40.15 m | 131 ft 2 in |
| Platform height maximum | 38.15 m | 125 ft 2 in |
| Horizontal reach maximum | 24.38 m | 80 ft |
| Below ground reach | 3.27 m | 10 ft 9 in |
| A Platform length | 0.91 m | 3 ft |
| B Platform width | 2.44 m | 8 ft |
| C Height - stowed | 3.07 m | 10 ft 1 in |
| D Length - stowed | 14.25 m | 46 ft 9 in |
| Length - transport (jib tucked under) | 12.17 m | 39 ft 11 in |
| E Width - axles retracted | 2.49 m | 8 ft 2 in |
| Width - axles extended | 3.35 m | 11 ft |
| F Wheelbase | 3.66 m | 12 ft |
| G Ground clearance - centre | 0.44 m | 1 ft 5.5 in |

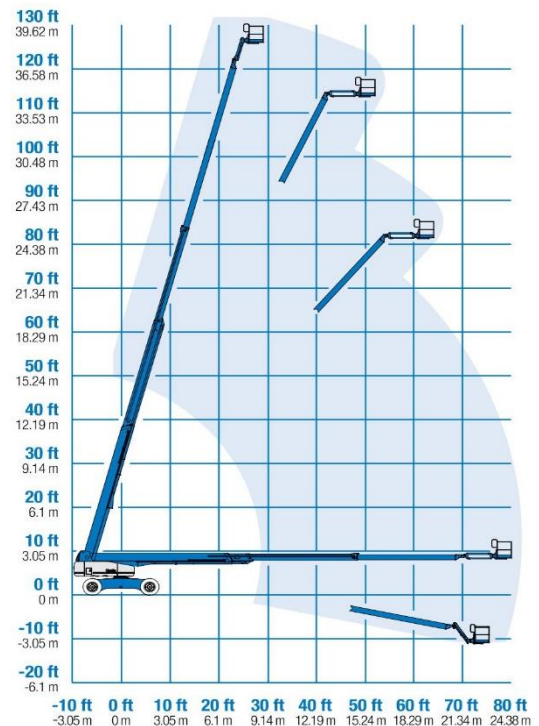
| PRODUCTIVITY | | |
|---|----------------------|-------------|
| Lift capacity | 227 kg | 500 lbs |
| Platform rotation | 160° | 160° |
| Vertical jib rotation | 135° | 135° |
| Turntable rotation | 360° continuous | |
| Turntable tailswing - axle retracted | 1.68 m | 5 ft 6 in |
| Turntable tailswing - axle extended | 1.24 m | 4 ft 1 in |
| Drive speed - stowed | 4.8 km/h | 3.0 mph |
| Drive speed - raised/extended below 80 ft | 1.1 km/h | 0.68 mph |
| Drive speed - raised/extended above 80 ft | 0.55 km/h | 0.34 mph |
| Gradeability - stowed** | 40% | 40% |
| Turning radius - axle retracted: inside | 4.01 m | 13 ft 2 in |
| outside | 6.75 m | 22 ft 2 in |
| Turning radius - axle extended: inside | 2.59 m | 8 ft 6 in |
| outside | 5.74 m | 18 ft 10 in |
| Controls | 12V DC proportionall | |
| Tyres - RT lug - Foam filled | 445/65 D22.5 | |

| POWER | | |
|-------------------------|---|--------|
| Power source | Deutz TD 2011 L04i 4-cylinder turbo diesel 55 kW (74 hp) | |
| Auxiliary power unit | 12V DC | 12V DC |
| Hydraulic tank capacity | 208 L | 55 gal |
| Fuel tank capacity | 151 L | 40 gal |

| WEIGHT*** | | |
|-----------|-----------|------------|
| | 20,739 kg | 45,721 lbs |

STANDARDS COMPLIANCE ANSI A92.5, CSA B354.4, CE Compliance, AS 1418.10

RANGE OF MOTION S™-125



* The metric equivalent of working height adds 2 m to platform height. U.S. adds 6 ft to platform height.
** Gradeability applies to driving on slopes. See operator's manual for details regarding slope ratings.
*** Weight will vary depending on options and/or country standards.



SELF-PROPELLED TELESCOPIC BOOMS

S™-125



Features

STANDARD FEATURES

MEASUREMENTS

S™-125

- 40.15 m (131 ft 2 in) working height
- 24.38 m (80 ft) horizontal reach
- 227 kg (500 lbs) lift capacity

PRODUCTIVITY

- 2.44 m (8 ft) steel platform
- 1.52 m (5 ft) jib boom with 135° working range
- 4WD
- 4WS
- Extendable axles
- Rough terrain foam-filled tyres
- Self-leveling platform
- Hydraulic platform rotation
- Fully proportional Hall effect joystick controls
- Hydraulic oil cooler
- Drive enable
- Horn
- Hour meter
- Tilt alarm
- Descent alarm
- Motion alarm
- 360° continuous turntable rotation
- Locking turntable covers
- Positive traction drive
- Two speed wheel motors
- Configurable controls to limit maximum height to 24.38 m (80 ft) or 30.48 m (100 ft)
- Ground control box cover
- Engine status display
- Thumb rocker steer
- Dual flashing beacons

POWER

- 12V DC auxiliary power
- Deutz turbo diesel 55 kW (74 hp)
- Anti-restart engine protection
- Auto engine fault shutdown

OPTIONS & ACCESSORIES

PRODUCTIVITY

- Platform swing gate
- Half mesh platform inserts with swing gate
- Platform top auxiliary rail
- Air line to platform
- Fire resistant hydraulic oil
- Biodegradable hydraulic oil
- Basic hostile environment kit
- Deluxe hostile environment kit
- Deluxe aircraft protection package (6 ft platform only)
- Tool tray
- Fluorescent tube caddy
- Platform work lights
- Front driving lights
- Lockable platform control box covers
- 1.83 m (6 ft) steel platform

POWER OPTIONS

- 240 V power to platform
- 7 kVA hydraulic generator (240 V/50 Hz)
- Cold Weather Packages
- Diesel scrubber/spark arrestor muffler
- Retained key selector switch

