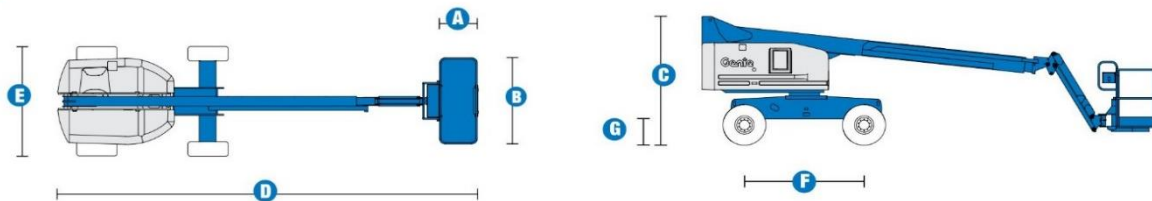


SELF-PROPELLED TELESCOPIC BOOMS

S™-45



Specifications



MODEL S™-45

MEASUREMENTS	Metric	US
Working height maximum*	15.72 m	51 ft
Platform height maximum	13.72 m	45 ft
Horizontal reach maximum	11.18 m	36 ft 8 in
Below ground reach	1.50 m	4 ft 11 in
A Platform length	0.91 m	3 ft
B Platform width	2.44 m	8 ft
C Height - stowed	2.49 m	8 ft 2 in
D Length - stowed	8.48 m	27 ft 10 in
Length - transport (jib tucked under)	6.80 m	22 ft 4 in
E Width: standard tyres	2.30 m	7 ft 6 in
F Wheelbase	2.20 m	7 ft 3 in
G Ground clearance - centre	0.32 m	1 ft 0.5 in

PRODUCTIVITY

Lift capacity	227 kg	500 lbs
Platform rotation	160°	160°
Vertical jib rotation	135°	135°
Turntable rotation	360° continuous	
Turntable tailswing	0.86 m	2 ft 10 in
Drive speed - stowed	7.7 km/h	4.8 mph
Drive speed - raised or extended	1.1 km/h	0.68 mph
Gradeability - stowed**	40%	40%
Turning radius - inside	2.00 m	6 ft 8 in
Turning radius - outside	4.78 m	15 ft 8 in
Controls	12V DC proportional	
Tyres - RT lug - Foam filled	12-16.5 in NHS	

POWER

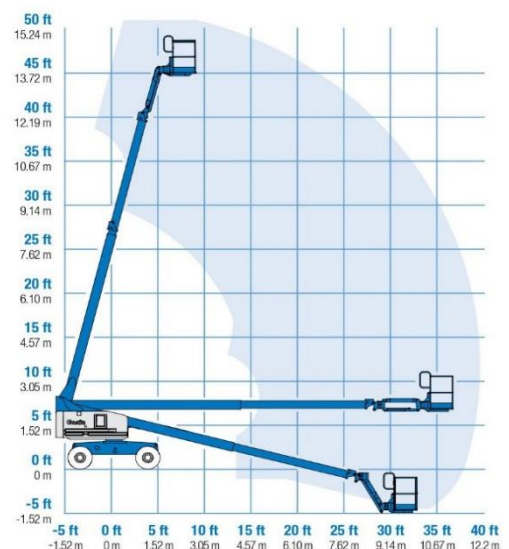
Power source	Deutz D2011L03i 3 cylinder diesel 34.3 kW (46 hp)	
Auxilliary power unit	12V DC	
Hydraulic tank capacity	170 L	45 gal
Fuel tank capacity	125 L	33 gal

WEIGHT

Weight***	7,151 kg	15,765 lbs
-----------	----------	------------

STANDARD COMPLIANCE ANSI A92.6, CSA B354.2, CE Compliance, AS 1418.10

RANGE OF MOTION S™-45



* The metric equivalent of working height adds 2 m to platform height. U.S adds 6 ft to platform height.
 ** Gradeability applies to driving on slopes. Gradability may vary depending on the weight of options installed on machine. See operators manual for details regarding slope ratings.
 *** Weight will vary depending on options and/or country standards.

SELF-PROPELLED TELESCOPIC BOOMS

S™-45



Features

STANDARD FEATURES

MEASUREMENTS

S™-45

- S™-45 has 15.72 m (51 ft) working height
- S™-45 has 11.18 m (36 ft 8 in) horizontal reach
- Up to 227 kg (500 lbs) lift capacity

PRODUCTIVITY

- 2.44 m (8 ft) steel platform
- 1.52 m (5 ft) jib boom with 135° working range
- 4WD Positive traction drive
- Full-time active oscillating axle
- Fully proportional controls
- 360° continuous turntable rotation
- Foam-filled Rough Terrain tyres
- Two speed wheel motors
- Closed-loop hydrostatic drive
- Engine protection package
- Auto engine fault shutdown
- Drive enable system
- Wire braided hose
- Hydraulic oil cooler
- Intake air heater
- Self-leveling platform
- Hydraulic platform rotation
- Swing-out engine tray
- Engine gauge package
- Locking turntable covers
- Foot switch time out
- Lockable platform control box covers
- Thumb rocker steer
- Tilt alarm
- Dual flashing beacons
- Electric horn
- Motion alarm
- Hour meter

POWER

- Deutz Diesel 36 kW (49 hp)
- 12V DC auxiliary power

OPTIONS & ACCESSORIES

PRODUCTIVITY

- Air line to platform
- Platform work lights
- Front driving lights
- Platform swing gate
- Half mesh platform inserts with swing gate
- Platform rail pinch guard
- Hostile environment packages
- Deluxe aircraft protection package
- Fluorescent tube caddy
- Tool tray
- Mine spec option
- 1.8 m (6 ft) steel platform

POWER OPTIONS

- Cold start packages
- 7 kVA hydraulic generator (240 V/50 Hz)
- 240 V power to platform

